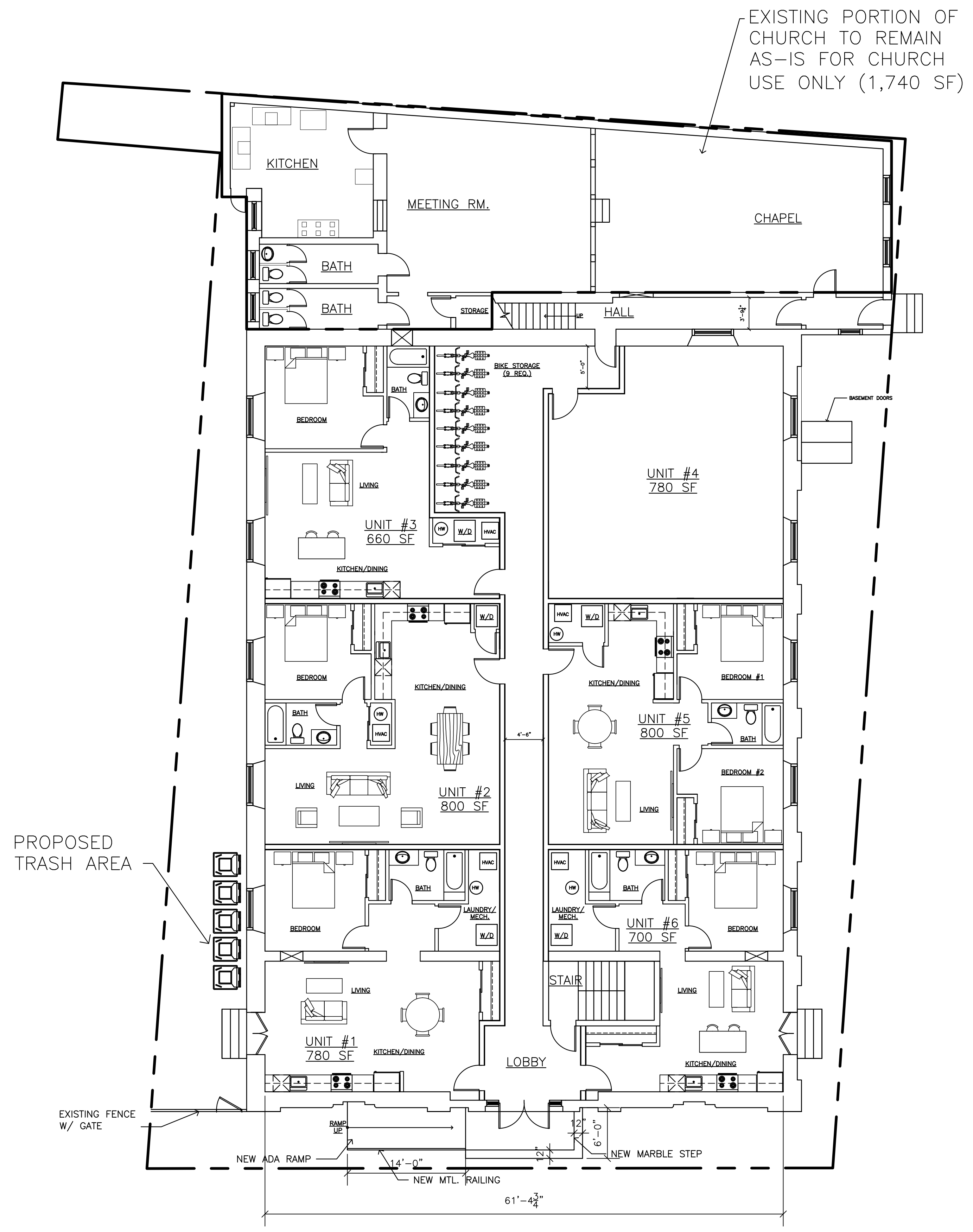


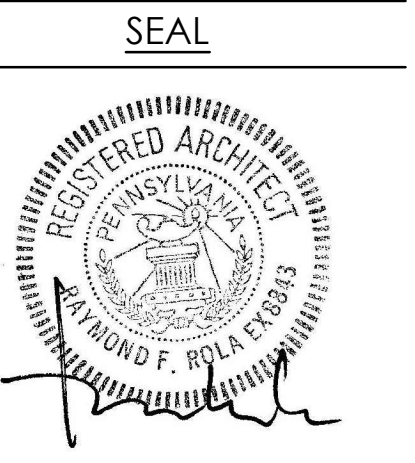
1 BASEMENT FLOOR PLAN
 A6 SCALE: 1/8" = 1' - 0"



2 FIRST FLOOR PLAN
 A6 SCALE: 1/8" = 1' - 0"

ARCHITECT

 raymond f. rola
 architect
 1518 walnut street
 suite 1300, philadelphia
 pa, 19102
 t: 215.546.3155
 f: 215.545.3999
 rolaarch@verizon.net



OWNER
 KENSINGTON M.E. CHURCH
 300-04 RICHMOND ST.
 PHILADELPHIA PA 19125

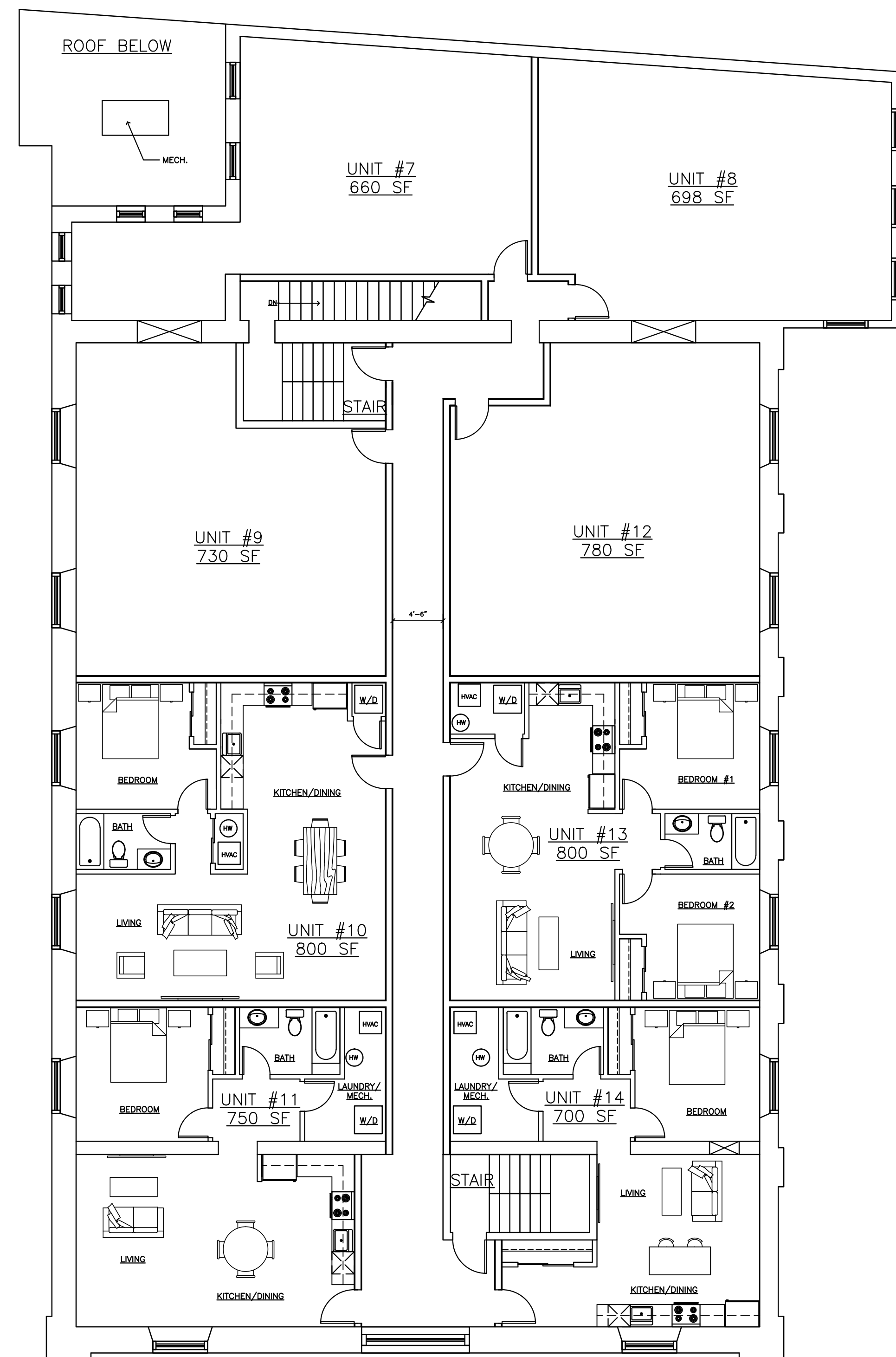
EQUITABLE OWNER
 OLD BRICK LOFTS LLC
 ELLIOT KOPEL
 1807 WIDENER PLACE
 PHILADELPHIA PA 19141

DATE	DESCRIPTION
07/11/18	ZONING
07/20/18	ADD BIKE STOR.
08/07/18	HISTORIC (IN-CONCEPT)
09/11/18	ZONING BOARD MTG.

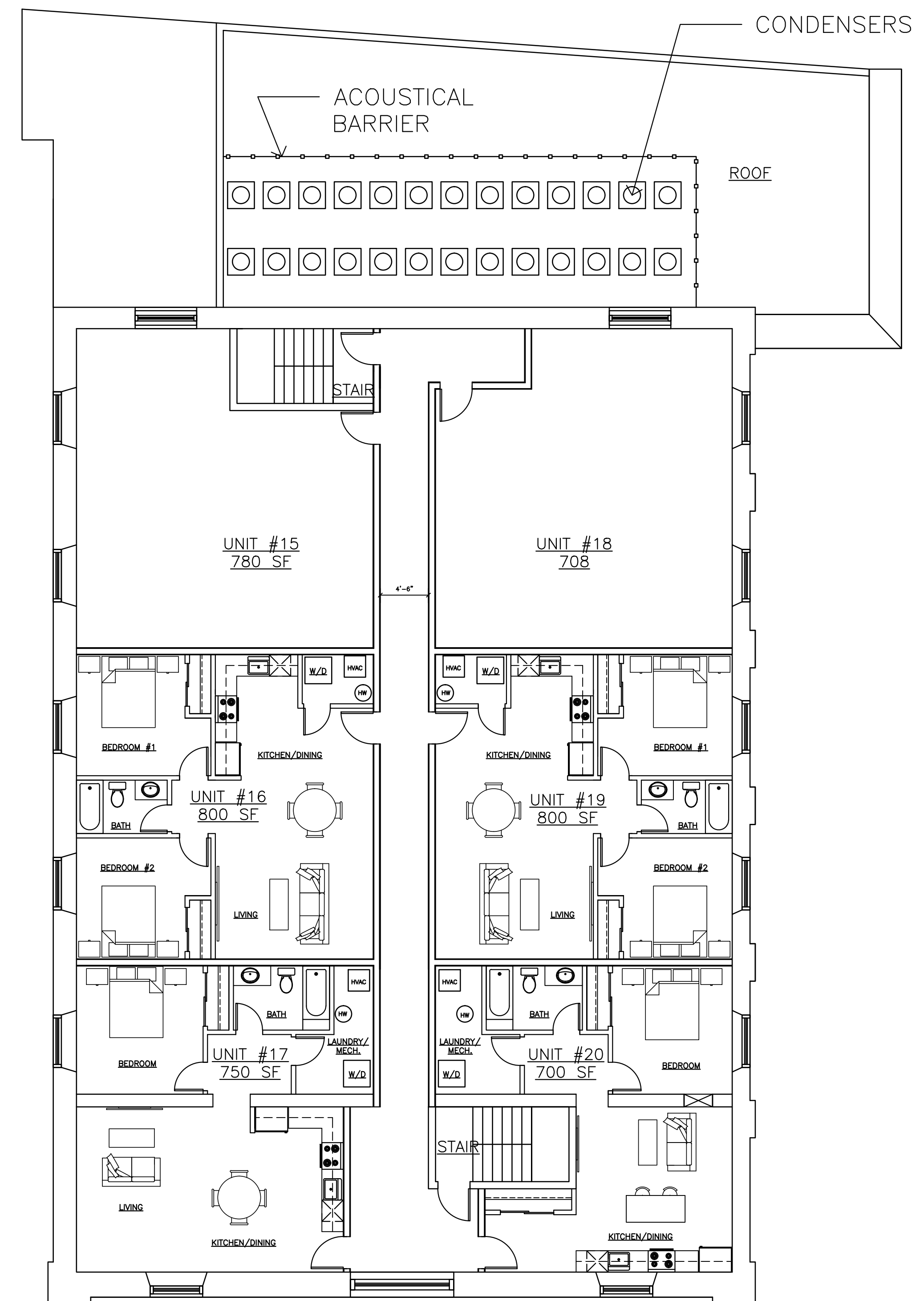
ALTERATIONS TO
 300 RICHMOND ST.

PROJECT LOCATION
 300 RICHMOND ST.
 PHILADELPHIA, PA

BLOCK: -
 LOT: -
 SHEET TITLE:
 PROJECT NO. 00000
 SCALE: AS NOTED
 DATE: 2018
 DRAWN BY: RR
 REVIEWED BY: RR
 SHEET NO.



1 SECOND FLOOR PLAN
A6 SCALE: 1/8" = 1' - 0"



2 THIRD FLOOR PLAN
A7 SCALE: 1/8" = 1' - 0"

ARCHITECT



raymond f. rola
architect
1518 walnut street
suite 1300, philadelphia
pa, 19102
t: 215.546.3155
f: 215.545.3999
rolaarch@verizon.net

SEAL



OWNER

KENSINGTON M.E. CHURCH
300-04 RICHMOND ST.
PHILADELPHIA PA 19125

EQUITABLE OWNER

OLD BRICK LOFTS LLC
ELLIOT KOPEL
1807 WIDENER PLACE
PHILADELPHIA PA 19141

△	DATE	DESCRIPTION
	07/11/18	ZONING
	07/20/18	ADD BIKE STOR.
	08/07/18	HISTORIC (IN-CONCEPT)
	09/11/18	ZONING BOARD MTG.

ALTERATIONS TO 300 RICHMOND ST.

PROJECT LOCATION

300 RICHMOND ST.
PHILADELPHIA, PA

BLOCK: -

LOT: -

SHEET TITLE:

PROJECT NO. 00000

SCALE: AS NOTED

DATE: 2018

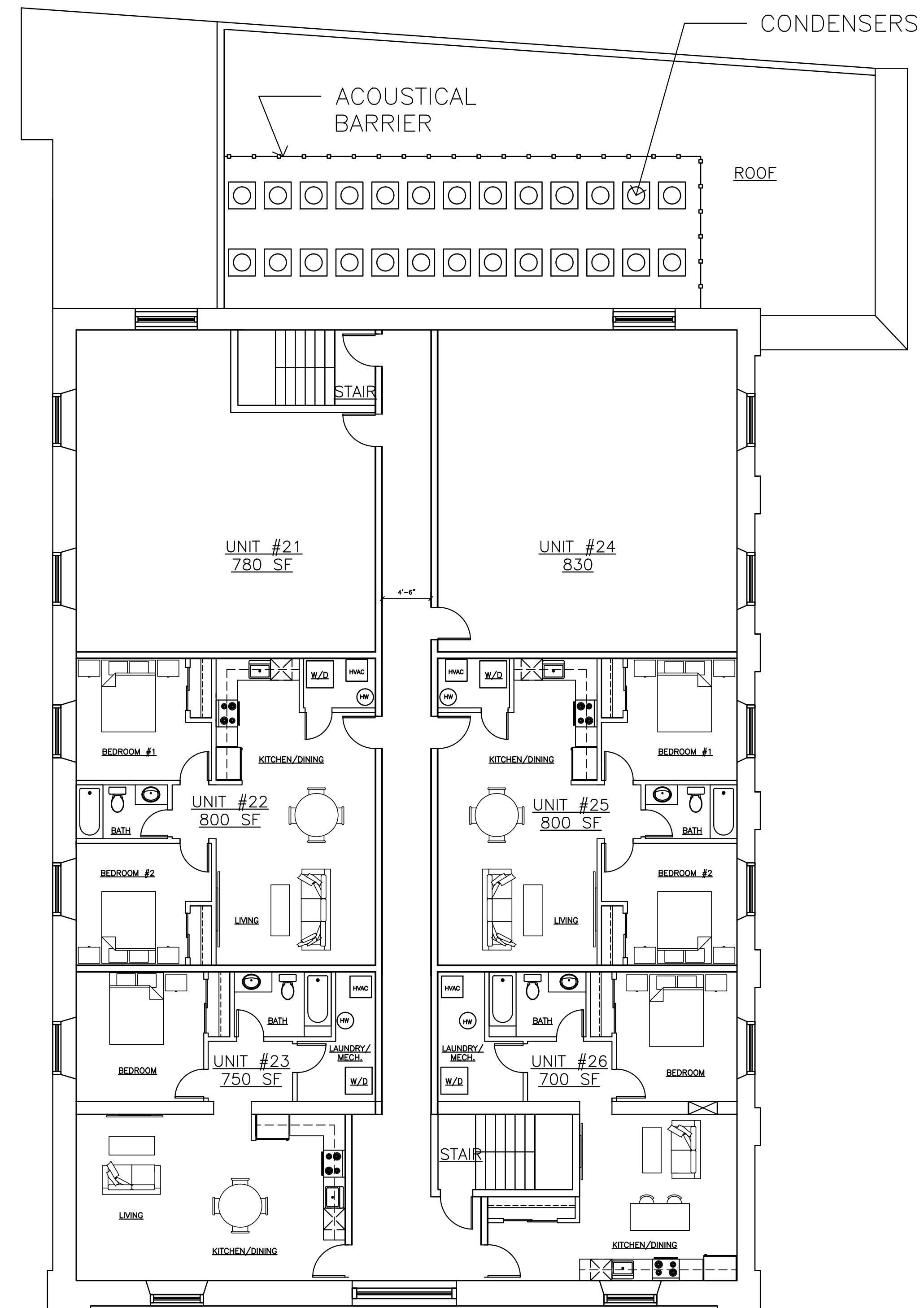
DRAWN BY: RR

REVIEWED BY: RR

SHEET NO.

A-7

300 RICHMOND ST. UNIT SUMMARY		
UNIT #	SQUARE FEET	BEDROOMS
1	780	1
2	800	1
3	660	1
4	780	1
5	800	2
6	700	1
7	660	1
8	698	1
9	730	1
10	800	1
11	750	1
12	780	1
13	800	2
14	700	1
15	780	1
16	800	2
17	750	1
18	708	1
19	800	2
20	700	1
21	780	1
22	800	2
23	750	1
24	830	1
25	800	2
26	700	1
TOTAL UNITS: 26		

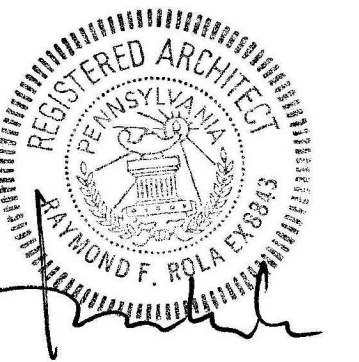


1
A8 FOURTH FLOOR PLAN
SCALE: 1/8" = 1' - 0"



1518 walnut street
suite 1300, philadelphia
pa, 19102
t: 215.546.3155
f: 215.545.3999
rolarch@verizon.net

SEAL



OWNER

KENSINGTON M.E. CHURCH
300-04 RICHMOND ST.
PHILADELPHIA PA 19125

EQUITABLE OWNER

OLD BRICK LOFTS LLC
ELLIOT KOPEL
1807 WIDENER PLACE
PHILADELPHIA PA 19141

DATE	DESCRIPTION
07/11/18	ZONING
07/20/18	ADD BIKE STOR.
08/07/18	HISTORIC (IN-CONCEPT)
09/11/18	ZONING BOARD MTG.

ALTERATIONS TO
300 RICHMOND ST.

PROJECT LOCATION

300 RICHMOND ST.
PHILADELPHIA, PA

BLOCK: -

LOT: -

SHEET TITLE:

PROJECT NO. 00000

SCALE: AS NOTED

DATE: 2018

DRAWN BY: RR

REVIEWED BY: RR

SHEET NO.

A-8